



CAMP SERENITY GUIDEBOOK

We are excited to welcome you to YOUR camp! We say your camp because this campground was built in honor of all your sacrifices to our nation, we are simply the stewards of the grounds. It is our sincere hope that you feel a sense of ownership while you enjoy your stay. We hope the following guides will assist you with any questions that may arise about the use of the facilities.

If you have any questions or issues please contact us at any of the following:

boardofdirectors@wwoadventures.com

Bob Giordano (President)– (315) 323-4632

James Myrick (Director)– (315) 771-7362

Scott Walrath (Director)– (315) 486-9560

GATE ACCESS

You will receive a gate code once your reservation is confirmed.

- We ask that you open gates inward toward the camp as opposed to out towards the road.
- If you are the only visitors staying at camp, we ask that you secure the gate if you're going to be away from camp for an extended period of time.

TRASH

- We do not offer any trash services on site. If you bring it in with you, then please take it with you when your stay is over.

CABIN SOLAR POWER SYSTEM



- The power by default is already turned on to each cabin
- If for some reason your cabins power is not working, perform the following:
 1. The first thing to check is the circuit breaker in the cabin itself. (see Fig.1)
 2. If the cabin breaker is on, then you're going to want to go to the lodge (largest building in camp) and check the cabins main circuit panel on the back wall of the lodge (see Fig.2)
 3. If all other breakers are turned on, then check the main power breaker to the solar system (see Fig.3)
- If you have checked all these and your still do not have power, please give one of us a call at the numbers listed on the front page



Fig. 1



Fig.2



Fig.3

CABIN HEATERS



Operating procedures

1. Open the fuel on the propane tank located on the outside of the cabin. Lift the blue cover and turn the valve counterclockwise. (see Fig. 5)
2. Turn the gas valve on. It is the blue valve located closest to the heater itself. (see Fig.4)
3. Turn the control knob to “pilot” (see Fig. 6)
4. Push down and hold the control knob
5. Press the red igniter button located just to the left of the control knob. (see Fig. 6) *You should hear a rapid metallic clicking sound.*
6. Down towards the bottom of the heater in the center is the pilot light. (see Fig. 7)
If the pilot light doesn't light immediately, continue to hold down the control knob in the pilot position, and hit the igniter button for a few seconds every 5-10 seconds until you get a steady blue flame on the pilot light. Sometimes it takes a minute or two to get the air out of the line.
7. Once you have a steady blue flame, you may release the control knob. (see Fig. 8)
8. Turn the control knob counterclockwise to your desired temperature setting. *Once you turn the knob to desired setting the heater will ignite the burner.*
9. ENJOY YOUR TOASTY CABIN!!

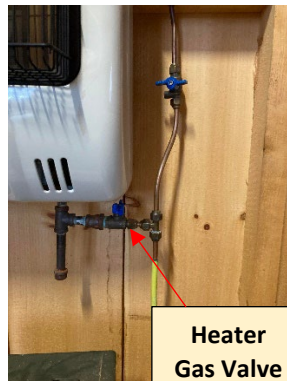


Fig. 4



Fig. 5

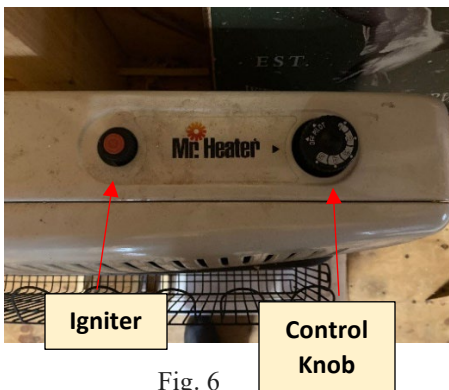


Fig. 6

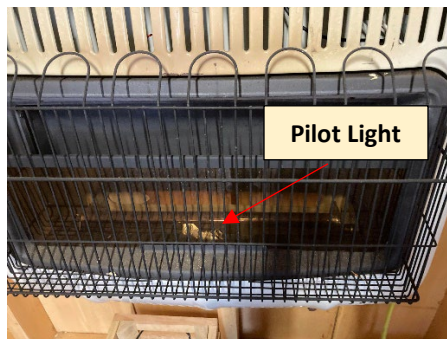


Fig. 7

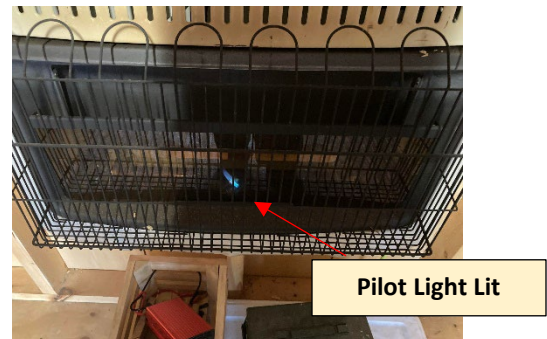


Fig. 8

PROPANE LIGHTS

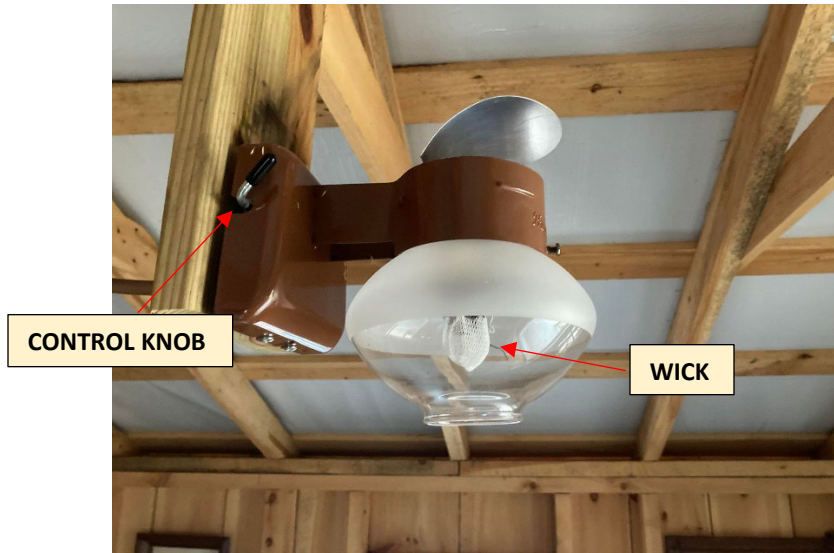


Fig. 9

Operating procedures

1. Open the fuel on the propane tank located on the outside of the cabin. Lift the blue cover and turn the valve counterclockwise. (see Fig. 5)
2. Turn the gas valve on. It is the blue valve located highest, near the heater. (see Fig. 10)
3. Push in and turn the control knob all the way up. (see Fig. 9)
4. Use a lighter or a match to light the wick. (see Fig. 9) *Sometimes it takes a bit for the gas to reach the light. Just keep trying to light until it ignites*

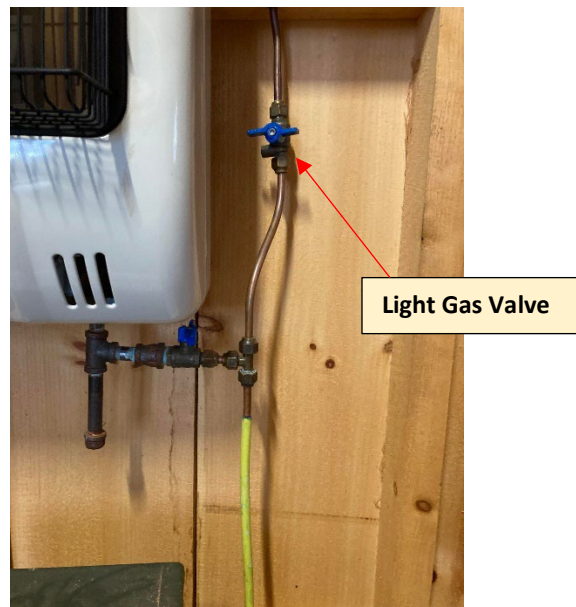


Fig. 10

PRIMITIVE CAMP SHOWER

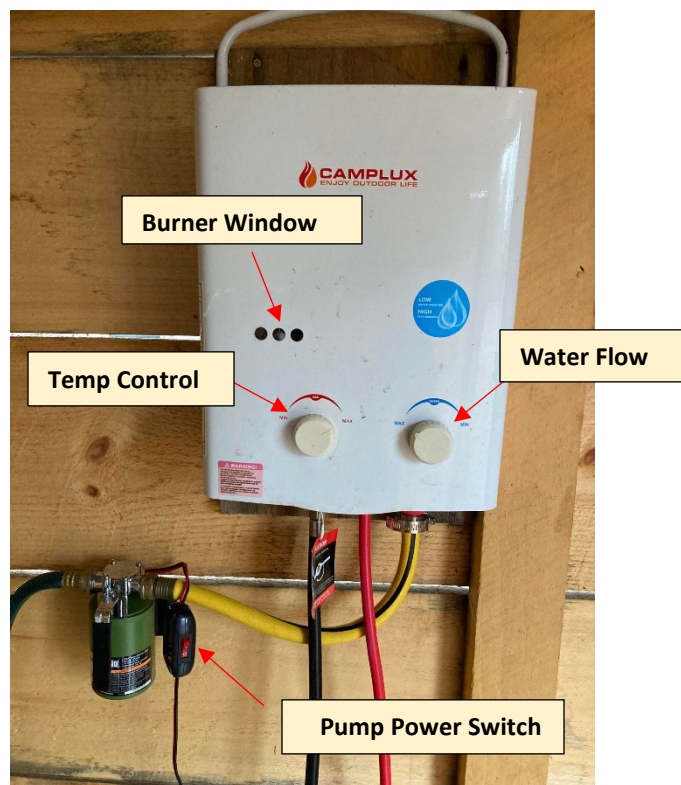


Fig. 11

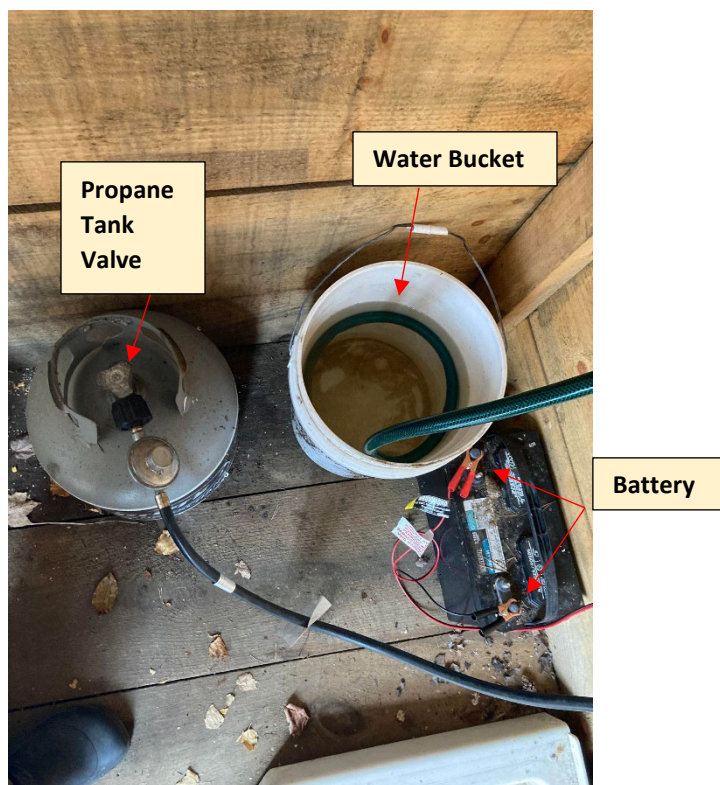


Fig. 12

Operating procedures

1. Fill the 5-gallon bucket with water at the well. (**WATER IS NON-POTABLE**) (see Fig. 12)
2. Place the green hose into the water bucket. (see Fig. 12)
3. Connect the pump to the battery terminals. (see Fig. 12)
4. Open the propane tank valve. Turn counterclockwise until fully open. (see Fig. 12)
5. Adjust the temperature and water flow controls to desired settings. (see Fig. 11) *We suggest setting them both in the halfway position to start. You can adjust them once you're in the water stream to your comfort.*
6. Turn on the pump power switch to start the flow of water. (see Fig. 11)
7. Once water has started flowing from the showerhead, check the burner window to ensure the burner is lit and heating your water. (see Fig. 11) *The burner is automatic ignition. It should light as soon as it senses water flow. You should see a blue flame in the little windows if it ignited properly.*
8. ENJOY A NICE WARM SHOWER!!

LODGE LIGHTS AND WOODSTOVE

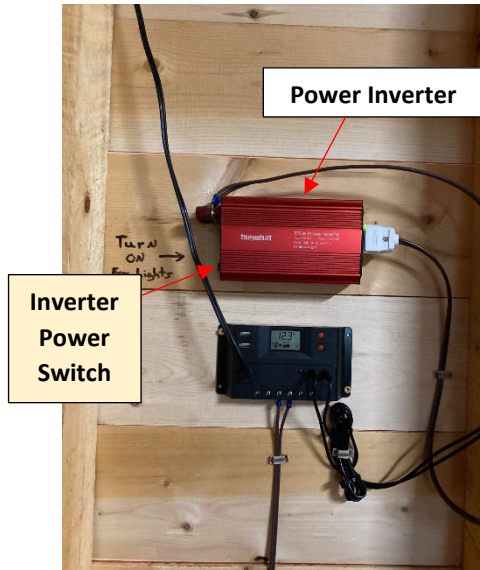


Fig. 13

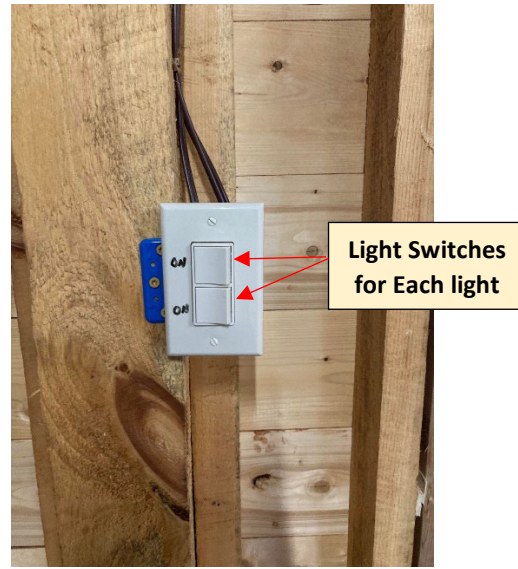


Fig. 14

Lights operation procedures

1. Locate the power inverter on the front wall near the opening to the bar. (see Fig. 13)
2. Turn on the switch on the left side of the inverter. (see Fig. 13)
3. The light switches next to the door will now function. (see Fig. 14)

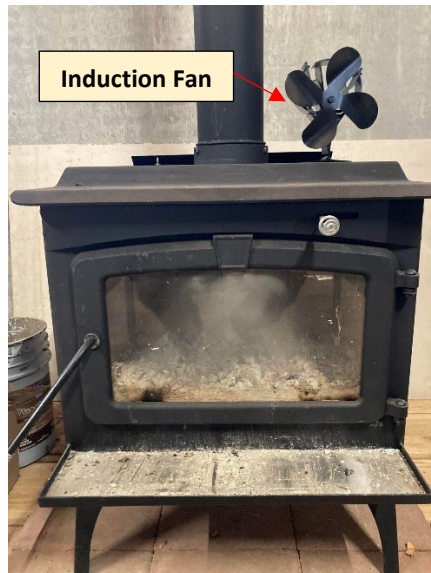


Fig. 15

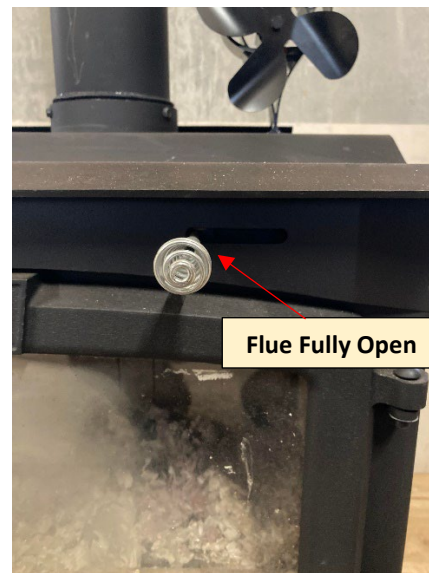


Fig. 16

Woodstove Operating procedures

1. Locate and load the woodstove with the wood from the front porch of the lodge.
****ONLY THE WOOD ON THE PORCH IS PERMITTED IN THE WOODSTOVE****
2. Open the flue of the woodstove. All the way to left is fully open. (see Fig. 16)
3. Light your fire and let it get going before shutting the door.
4. The fan on the top of the stove is an induction fan and works off heat coming from the woodstove. It will start spinning automatically as the stove warms up. (see Fig. 15)